



THE RIDGEWAY BARNs
— WILTSHIRE —

**LUXURY FARMHOUSE
ACCOMMODATION**

IN THE NORTH WESSEX DOWNS



THE RIDGEWAY BARN S

— WILTSHIRE —

Gather with family and friends. Explore the historic Ridgeway and North Wessex Downs. Self-cater or celebrate in style. Relax in the beautiful



garden or snuggle up in front of a cosy fire. Alex and Becky look forward to welcoming you to The Ridgeway Barns, the perfect place for gathering, celebrating, and exploring the local area.

Whether you have already booked your holiday with us or are still in the planning stage, we have put together this brochure to help inform your stay. Further information, like ideas for things to do in the local area are included in our welcome brochure, available on request.



For further information or to make a booking please contact us at hello@theridgewaybarns.co.uk.



THE FARM

The Ridgeway Barns are located on Liddington Warren Farm, a mixed arable and sheep farm which has been cultivated by the Harding and Ford family since 1947. Nestled in the North Wessex Downs, the farm extends to some 1000 acres, and is bordered by the ancient Ridgeway trail ~ great for both walking and mountain biking.

On the farm we grow a mixture of wheat, barley and oats, using regenerative farming techniques. This includes a flock of sheep which graze the various fields throughout the year. We are also home to sixteen friendly horses who reside in the DIY livery surrounding the farmhouse.



THE FARMHOUSE

In 2021 the farmhouse was completely renovated, upgrading the spacious property while retaining many of the original features. Downstairs there are two formal reception rooms, a snug, and a spacious kitchen diner.



Enjoy a morning coffee while taking in the views of the garden and landscape beyond, or an evening drinks reception in the Uffington Room.

Dine in style in the spacious Avebury Room, with seating for up to sixteen around our 12 ft table.

Or snuggle up for a board game or a movie night in the cosy TV snug.



THE KITCHEN



As in any good farmhouse, the spacious kitchen diner is very much the heart of the home, and is where you can expect to meet with your group as you rise in the morning, enjoy a hot drink or cool beer during the day, or gather with a glass of wine as you prepare an evening

meal.

The kitchen is well equipped for your stay, with an Everhot oven, conventional oven, fridge freezer, dishwasher, and all the crockery, cutlery, glassware and bakeware you need for catering for your group. Further details are at the back of this brochure.

The room has a large traditional dining table with seating for ten, and space for a few more if you wish. Pop a log on the woodburning stove to complete the farmhouse atmosphere!

The dining area leads through to a conservatory with views into the garden, and where you might find a good book or game to play.



THE BEDROOMS

On the first floor you will find six luxurious bedrooms, tastefully decorated and furnished to a high standard, and named after our fields that they overlook.

Cowleaze is a spacious king-sized room with en-suite shower room, and traditional sash window with far-reaching views. There is space in this room for our pop-up bed or cot. Perfect for couples.



Sugar Hill is a spacious king-sized room with en-suite bathroom. There is space in this room for our pop-up bed or cot, making it great for young families.



Cradled between these two master bedrooms is **Sheep Paddock**, a delightful single room also benefiting from the views.



Sugar Hill's en-suite bathroom with roll-top bath and overhead shower.





Tucked away in the oldest part of the farmhouse, **Galley Hill** is a cosy king-sized room with en-suite bathroom. There is space in this room for our pop-up bed or cot.

Next to Galley Hill, **Bale Ground** is a large twin room with space for our pop-up bed or cot, equally suitable for adults or children.



Home Near, the smallest of our rooms is also at this end of the farmhouse, and is ideal for children.

The twin and single rooms share the family bathroom, with free standing roll-top bath and walk in shower.

All bedrooms will be expertly made up with bed linen and two towels per guest for your stay.



THE OLD STABLES

The Old Stables are our stunning private honeymoon suite, located just across a small courtyard opposite the farmhouse kitchen.



The main bedroom has a luxurious super king-sized bed, sofa, wall mounted TV and dressing table, so whether you are staying for a weekend or a whole week, there is plenty of space to relax.

The 4-piece en-suite bathroom has a free-standing bath and walk-in shower, while the well-equipped kitchenette has everything you need for self-catering for a weekend in the countryside.



The Old Stables are available to hire individually, or alongside the farmhouse.



THE PUMPHOUSE



Attached to the main farmhouse, and accessed via the same courtyard is The Pumphouse, a self-contained ground-floor annex that sleeps two, making it ideal for those with reduced mobility.

The bedroom can be set up either as a king-sized bed or as a twin (by default we will set it up as a king, so please do let us know at least 2 weeks in advance if you would like it setting as a twin).



The kitchenette is well equipped with kettle, toaster, microwave oven, induction hob and a small fridge.

The en-suite comes complete with walk in shower. The Pumphouse is available to hire individually, or alongside the farmhouse.



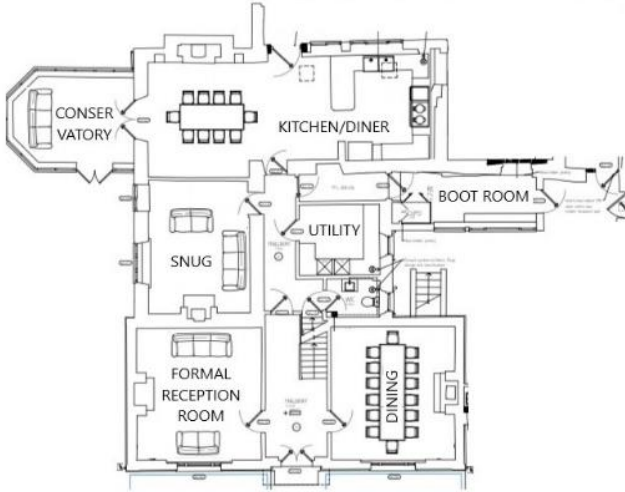
THE GARDENS



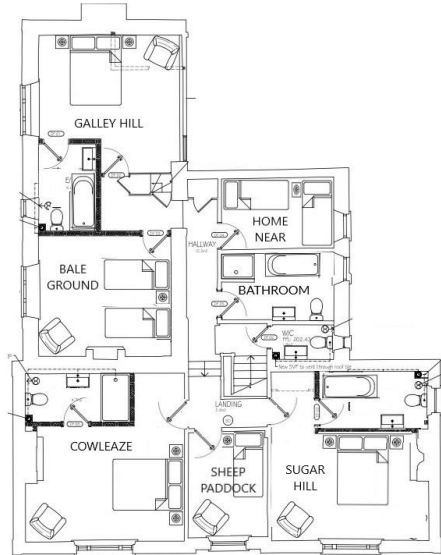
Outside, the large garden and terrace benefit from stunning views over the rolling chalklands of the North Wessex Downs. Enjoy alfresco dining cooking over the gas BBQ, or while the night away roasting marshmallows around the firepit. There is ample space for children, dogs and grown-ups to run around!



FLOORPLANS



Ground floor of farmhouse (annexes not shown)



First floor of farmhouse



FREQUENTLY ASKED QUESTIONS

What is your minimum stay? We have a two-night minimum stay for farmhouse bookings, and for the annexes at weekends. One-night stays are possible in the annexes midweek.

Do you have any restricted check in/check out days? In general we try to remain flexible for your requirements, although we don't do check out on a Saturday or check in on a Sunday.

What time is check in & check out? Our normal check in time is 4 pm, and check out at 10 am.

Do you offer early check-in or late check out? Please speak to us if you would like an early check in or late check out. Additional charges may apply. For weekend bookings you will often find the cost of booking Sunday night is great value, and means you can stay as long as you'd like on Sunday.

How do we get to The Ridgeway Barns? We are located just 5 minutes' drive from junction 15 of the M4, although you would never know it once you are here. Public transport in the area is extremely limited, so we recommend arriving by car or taxi (Swindon train station is 7 miles away).

Is there parking on site? There is ample free parking on site. As a minimum you will have access to six parking spaces for the main farmhouse, and an additional parking space for each annex.

Do you allow dogs? Yes, we do! Dogs are very welcome in the farmhouse (3 max) and Pumhouse (1 max). Additional charges apply.

Do you provide bed linen and towels? Yes ~ all beds will be expertly made for your stay, and we provide one bath and one hand towel for each guest. Hand wash, body wash and loo roll are provided in each bathroom.



Do you provide hairdryers? Yes, there is a hairdryer in each annex, and two in the farmhouse (typically kept in Cowleaze and Sugar Hill).

Do you have a travel cot, highchair and children's cutlery? Yes, we have two travel cots, two highchairs and a selection of kids' cutlery and crockery. Please just ask in advance, and we will put them out for your stay. Please note, the travel cots come with a sheet but no extra bedding.

Are there cleaning and laundry facilities available? Yes, in the farmhouse the utility room is available for your use, including washer-drier, iron & board, vacuum cleaner, broom and mop.

Does the house have Wi-Fi? Yes! Wi-Fi is available throughout the house and annexes. Passwords can be found in the welcome pack.

Do you have a TV, radio and sound system? There is a large TV in the snug, and one in each annex, and there is a radio in the kitchen and each annex.

Do you provide wood for the woodburning stove? We provide a starter pack of firewood and firelighters. If you require additional wood, please purchase this locally.

Do you allow firepits, sparklers and fireworks. We have a fire pit available for you to use during your stay. Sparklers are permitted outside. Unfortunately, we do not allow fireworks due to the risk to the farm.

Is breakfast included? Accommodation is let on a self-catered basis. Breakfast hampers can be provided on request ~ please see our breakfast hamper options.

Can we hire in a chef? Yes of course! If you would like to make your gathering extra special, we can certainly recommend local chef Joe Ouseley (Wild Goose Chef). Further detail at www.wildgoosechef.com



KITCHEN FACILITIES

The table below aims to provide an overview of the items provided for your planning purposes. Exact provision may vary slightly. Please ask if you need to know any specifics.

Item/facility	Farmhouse	The Old Stables	The Pumphouse
Cookers	Everhot oven, conventional oven, microwave oven, induction hob, toaster.	Microwave oven, electric hob, toaster.	Microwave oven, portable induction hob, toaster.
Refrigeration	American-style fridge-freezer.	Refrigerator	Refrigerator
Dishwashing	Twin sink plus dishwasher.	Single sink	Single sink
Cooking pans and utensils	A selection of pots, pans, bakeware and baking trays, plus a wide range of utensils.	One pot, one frying pan, one baking tray, plus essential utensils.	One pot, one frying pan, one baking tray, plus essential utensils.
Chopping boards	A selection of wooden and plastic chopping boards.	Two plastic chopping boards	Two plastic chopping boards
Knives	One knife block, plus additional knives.	Two sharp knives	Two sharp knives
Serving platters	A selection of large bowls and platters etc.	At least one large bowl.	At least one large bowl.
Tea and coffee making facilities	Two kettles, two tea pots, two cafetieres and a filter coffee machine.	One kettle, one tea pot and one 8-cup cafetiere.	One kettle, one tea pot and one 3-cup cafetiere.
Crockery	24 sets of dinner plates, side plates, bowls, mugs and tea cups.	4 sets of dinner plates, side plates, bowls and mugs.	2 sets of dinner plates, side plates, bowls, and mugs.
Cutlery	24 sets of knives, forks, side knives, side forks, dessert spoons, tea spoons. 12 serving spoons and soup spoons.	6 sets of: knives, forks, dessert spoons and tea spoons.	6 sets of: knives, forks, dessert spoons and tea spoons.
Glassware	24 sets of tumblers, high ball glasses, wine glasses, champagne flutes and pint glasses.	2 sets of tumblers, high ball glasses, wine glasses, and champagne flutes.	2 sets of tumblers, high ball glasses, wine glasses, and champagne flutes.
Children's utensils	A selection of plates, bowls, cups and cutlery.		
Sundry Items	We typically provide a welcome pack including tea, coffee, milk and biscuits. The kitchens are also stocked with some basics including salt, pepper, cooking oil and kitchen foil etc.		



ACCOMMODATION HIRE PRICES 2024

- **The Farmhouse and annexes.** Weekday stays from £1,900 for a 2-night stay. Longer stays are of course possible, and discounts are offered on the nightly price for stays of 4 nights or more. Weekend stays range from £3,150 - £4,600 for 2-3 nights. Bank holiday weekends from £4,750 (3 night minimum).
- **The Farmhouse only.** Weekday stays from £1,700 for a 2-night stay. Weekend stays range from £2,850 - £4,250 for 2-3 nights.
- **The Old Stables.** Weeknight stays from £175 for 1 night, or £125 per night for stays of 2 nights or more. Weekend stays range from £300 - £500 for 2-3 nights.
- **The Pumphouse.** Weeknight stays from £140 for 1 night, or £100 per night for stays of 2 nights or more. Weekend stays range from £240 - £400 for 2-3 nights.





<https://linktr.ee/TheRidgewayBarns>

www.theridgewaybarns.co.uk
hello@theridgewaybarns.co.uk
01793 791746 | 07828 518688



THE RIDGEWAY BARN S
— WILTSHIRE —



The Ridgeway Barns, Liddington Warren, Wiltshire, SN4
0EB